



Screening for COVID-19

FloridaHealth.gov/COVID-19 • Florida Department of Health

Are you experiencing symptoms?

Symptoms may appear in 2–14 days after exposure to the virus.

1



FEVER



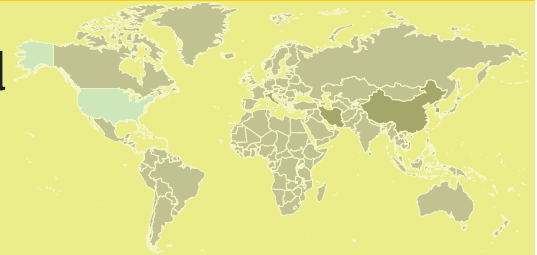
COUGH



SHORTNESS OF BREATH

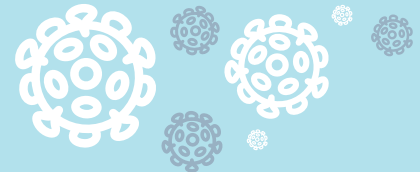
2

Have you traveled and returned from China, Iran, Italy or South Korea within the last 14 days?



3

Have you been around someone diagnosed with COVID-19?



If you answered “yes” to any of the above questions, contact your local county health department (CHD) by scanning the code for the local CHD finder or call 1-866-779-6121



Guidance

- Self monitor for fever, cough, or other respiratory symptoms for 14 days.
- Avoid contact with sick people.
- Delay any additional travel plans until no longer sick.
- Wash hands often with soap and water for at least 20 seconds.
- Cover mouth and nose with a tissue or sleeve when coughing or sneezing. Throw the tissue in the trash.